



BANGLADESH

ESTABLISHED
2006







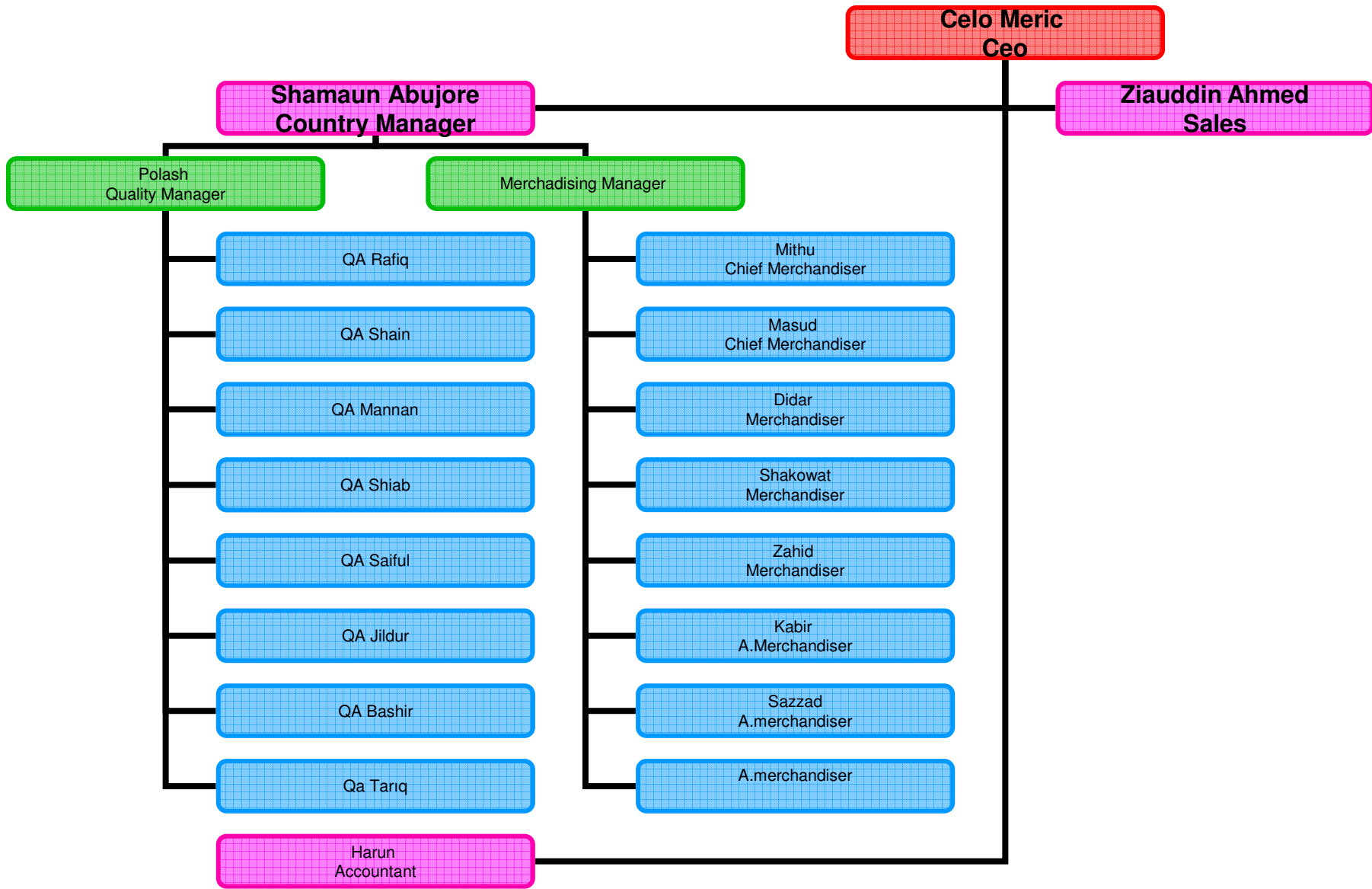
CHERRYFIELDSESBY BANGLADESH

Location

**Nam Vila, Apt # 4-1/A, 1/F, Road # 6, Gulshan-1,
Dhaka-1212 Tel:+88-02-9890730**



Organogram



MARKET STRENGTHS -1

- **Bangladesh - the country of world famous muslin fabric and the Great Royal Bengal Tiger has now emerged as an apparel giant in the world textile and apparel market. The country exports its apparel products worth about 9.0 billion US\$ per year to the USA, EU, Canada and most of the Scandinavian and middle eastern countries. At present the country is the 6th largest apparel supplier to the USA and EU countries. The major products are Knit and Woven Shirts and Blouses, Trousers, Skirts, Shorts, Jackets, Coats, Sweaters, Sportswear and many more casual and fashion apparels .**
- **The Industry made a modest start in 1984 with a few shirt factories exporting to USA, mainly with the spillover Korean orders due to quota. Today the industry has grown as the biggest export earner (76% of total exports), employing more than 2.5 million workforce. Today there are about 2500 export oriented ready-made garment industry in Bangladesh those are clustered over mainly Dhaka and Chittagong. Such distribution offers buyers advantage to choose the right manufacturers and exporters, throughout the year, with minimum effort.**
- **Bangladesh is one of the biggest exporter of knitwear to EU and USA, mainly due to very strong backward linkage such as, availability of knit yarn and vertically integrated kni**

MARKET STRENGTHS -2

- **State of the art, vertically integrated factories, producing yarn to quality garments. Most of the vertical units have their own placement printing and embroidery units, which offer shorter lead times and the best quality.**
- **Solid, dyed, prints and Yarn Dyed specialization.**
- **Local spinning industry is offering new and innovative yarn all the time.**
- **The new generation of professionals in the industry are well educated and highly skilled, ability to interpret easily buyers' technical requirements and are extremely conscious about quality and timely delivery.**
- **Government provides incentives to garment factories using local yarn and fabrics.**
- **Bangladesh continues to enjoy duty free access to EU and Canada, and negotiations are ongoing for a similar access to the USA**
- **Availability of vast, skilled and low cost labor is one of the greatest strength of Bangladesh, offering most competitive prices, combined with high quality.**

TEXTILE ECONOMY

- **Bangladesh is the unbeatable global supplier for basic and semi basic knit and woven wear, due to its strength of low cost labor and GSP/LDC facilities**
- **Textile sector is considered as Thrust Sector by the Government, giving special incentives to entrepreneurs, which in turn has augmented the overall increase of production capacity and diversification of product mix.**
- **Competitive wage rate together with easily trainable workforce, entrepreneurial skill, expanding supply side capacity, and government policy support helped to translate the comparative advantages into competitive advantages.**
- **The core strength of the industry low cost labor and the backward linkage. The entrepreneurs of the sector not only increased their stitching capacity overtime but also invested in the allied industry to augment the overall capacity of the total sector with the same pace. Over the period of time knitwear and denim have gradually become almost self sufficient in fabric and yarn. This improvement has become possible because of the integrated growth of spinning and denim fabric factories in line of the growth of country's stitching capacity and increased need of the yarn and fabric.**

EXPORT PERFORMANCE

- In 2007 Bangladesh achieved a total garment export figure of US \$ 9.00 Billion \$ - increase of 17.39% over last year.

KEY FABRICS & YARN

- Knit constructions – jersey, rib, waffle, interlock, terry, fleece (one side/both side), feeder & engineering stripe,
- Woven constructions – poplin, twill, canvass, denim, etc.
- Piece dye, yarn dye and prints (placement & all over).
- Yarn sizes from 7/1 to 60/1.
- Thread counts as high as 1000TC.
- Cotton, organic cotton
- Cotton blends with polyester, viscose and modal.
- Synthetic fibers, Coolmax,
- Milk fiber, Soya Fibers and Bamboo.
- Nanotex, Anti microbial, and Aromatic finishes are available, water/dust repellent,

KNITWEAR

- Knitwear is the key strength of Bangladesh
- Knitted fabric both single and double knit, like jersey, pique, ribs, interlock, ottoman, mesh, twill, herringbone, crepe jersey etc.
- Capable to offer all kinds of washes & finishes.
- Equipped to offer embellishments, including printing, hand & machine embroidery, rhinestones, Swarovsky,

WOVEN

- Weaving sector is the growing important textile sub-sectors.
- About 25% of the woven fabrics are produced locally, and the rest are imported from China, Indonesia, Thailand, India and Pakistan. New investments are being made by garment producers for backward linkage support and already many varieties of fabrics are available from local source, enabling short lead time commitments.
- In the woven category we can easily source denim, twills, stretched plain weaved, canvas, poplin, herringbone, ottoman, seer sucker, etc., both in 100% cotton and PC blended.
- Equipped to offer all kinds of Washes, Embellishments, embroideries, patch work, etc.

QUOTA HIGHLIGHTS

- According to WTO agreement, quotas are phased out and import tariffs are reduced in the major importing markets of textile items from Bangladesh. From the year 2005, all quota restrictions are eliminated and tariffs are reduced to minimum limits.
- Bangladesh enjoys duty free access to EU, Canada, Japan, Argentina, Mexico and Brazil, if the fabric and the garment is produced (2 stages) in the country. Under this facility, almost all knitwear and most of the woven wear items are exported to these countries duty free



Bangladesh

DHAKA

DUTY FREE TO EUROPE

OWN OFFICE

- Full service Office
- Teamleader
- Merchandisers
- QA and QC staff

PRODUCT

- Jersey, piques
- Flatknits (Cotton based)
- Woven bottoms Woven shirts (casual)
- Denim

PRODUCTION LEADTIME

- 7-9 Weeks

SHIPPING LEADTIME

- EU: 25 Days
- USA: 30-35 Days
(depends on port)

ADVANTAGE

- Price
- Capacity

Come to discover
Bangladesh with

